

# **StarProg Series**

## **Engineering Programmer**

### **User Manual**

**Version 3.0**



## Table of Content

<b>I. General Description</b> .....	<b>2</b>
<b>II. Product Information</b> .....	<b>2</b>
<b>III. System Requirements</b> .....	<b>2</b>
<b>IV. Hardware Description</b> .....	<b>3</b>
<b>V. Quick User Guide</b> .....	<b>5</b>
5.1 Software Installation .....	5
5.2 StarProg Setup .....	6
5.3 Dediware Software Setting .....	6
<b>VI. Appendix</b> .....	<b>9</b>
<b>VII. Revision History</b> .....	<b>10</b>

**Important notice:**

This document is provided as a guide line and must not be disclosed without consent of DediProg. However, no responsibility is assumed for errors that might appear.

DediProg reserves the right to make any changes to the product and/or the specification at any time without notice. No part of this document may be copied or reproduced in any form or by any means without prior written consent of DediProg.

## I. General Description

This user manual mainly describes the hardware features of StarProg Series. For further information and documents, please visit our website: <http://www.dediprogram.com/download>

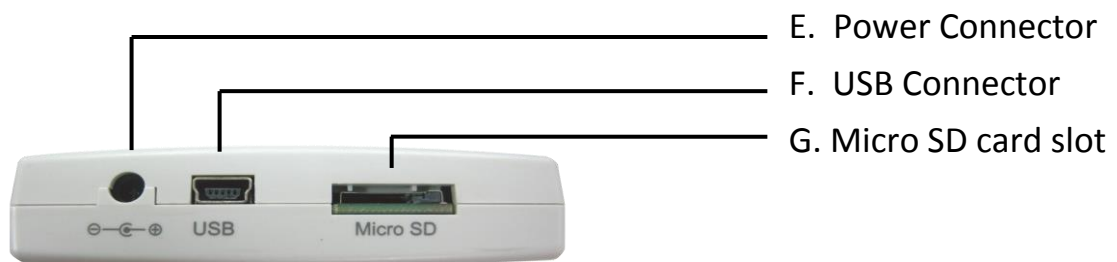
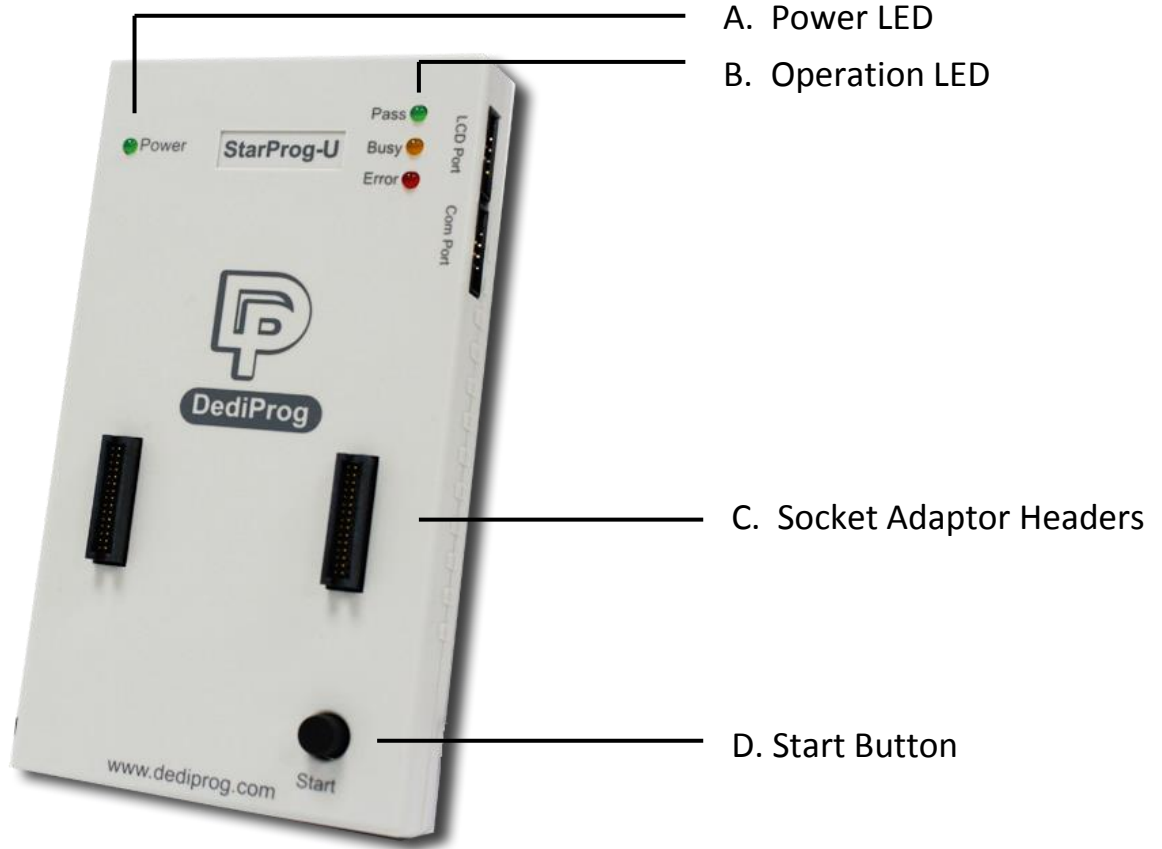
## II. Product Information

Programmer \ Features	StarProg-U	StarProg-F
IC Support	Universal	EEPROM/FLASH/eMMC/eMCP
Mini USB port	√	√
Socket adaptor connector	√	√
Power/Pass/Busy/Error LED	√	√
Start button	√	√
Multiple programmers	√	√

## III. System Requirements

<b>CPU:</b>	P4 or above
<b>OS:</b>	Win XP or above
<b>USB Port:</b>	USB 2.0
<b>Free Disk Space:</b>	At least 1GB
<b>CD Rom:</b>	Necessary

## IV. Hardware Description



### **A. Power LED**

Power LED shines when StarProg series is powered by USB or power adaptor.

### **B. Operation LED**

**Red LED:** Error, the programming fail or verify error.

**Yellow LED:** Busy, operation on going.

**Green LED:** Pass, the programming successful.

### **C. Socket Adaptor Headers**

Socket adaptor headers are used to connect to different socket adaptors provided by DediProg in order to support all package types.

### **D. Start Button**

By pressing the start button, the StarProg series can do the batch function.

### **E. Power Connector**

Connect power adaptor to StarProg series when executing stand-alone programming. USB can also be used as power source during stand-alone programming.

### **F. USB Connector**

USB connector is used to communicate with the Dediware software during the USB mode and provide the power source.

### **G. Micro SD card slot**

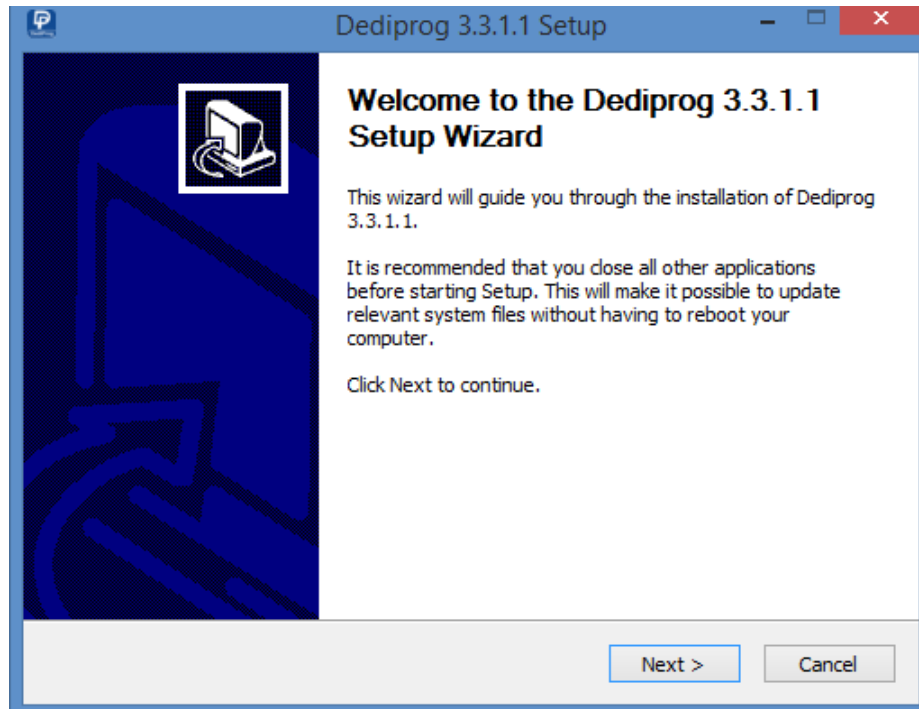
Placed the Micro SD card when used production mode.

**※ Note : Please ensure placed the SD card when multiple programmers connection or select production mode.**

## V. Quick User Guide

### 5.1 Software Installation

1. Install **Dediware** software



2. After installation, **DediProg** icon will appears on desktop.



## 5.2 StarProg Setup

1. Connect StarProg to PC
2. Placed socket adaptor to StarProg programmer
3. Put IC on socket adaptor.

## 5.3 Dediware Software Setting

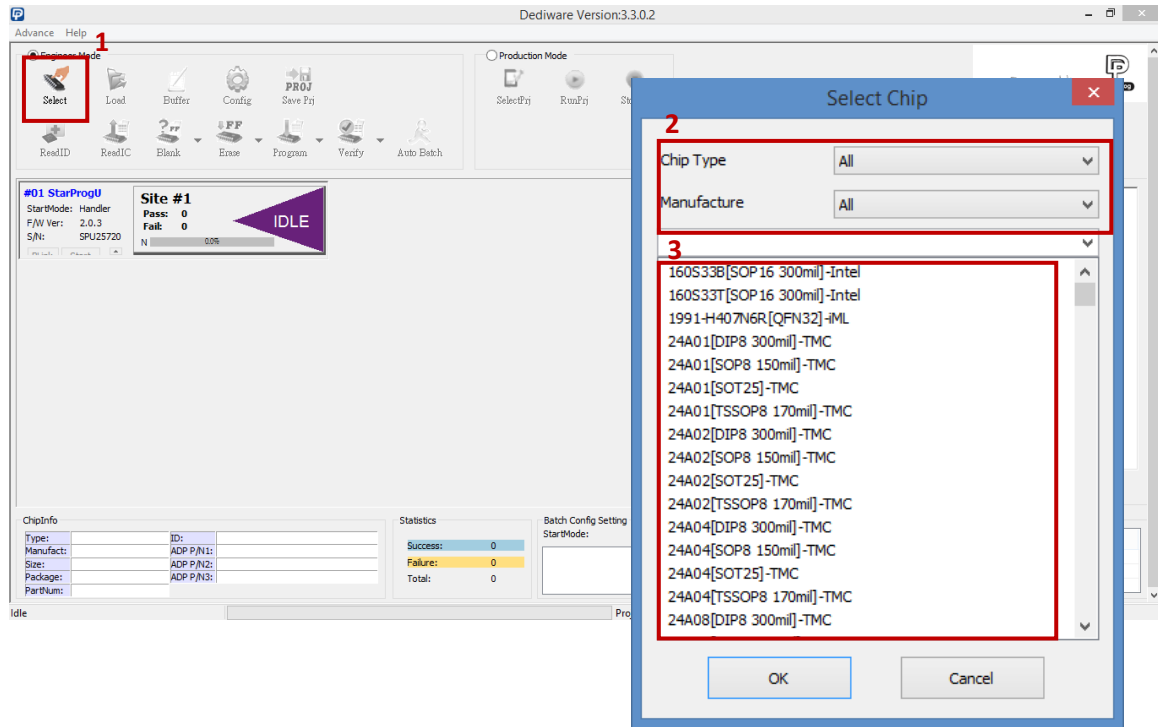
1. Double click DediProg icon to open Dediware software.



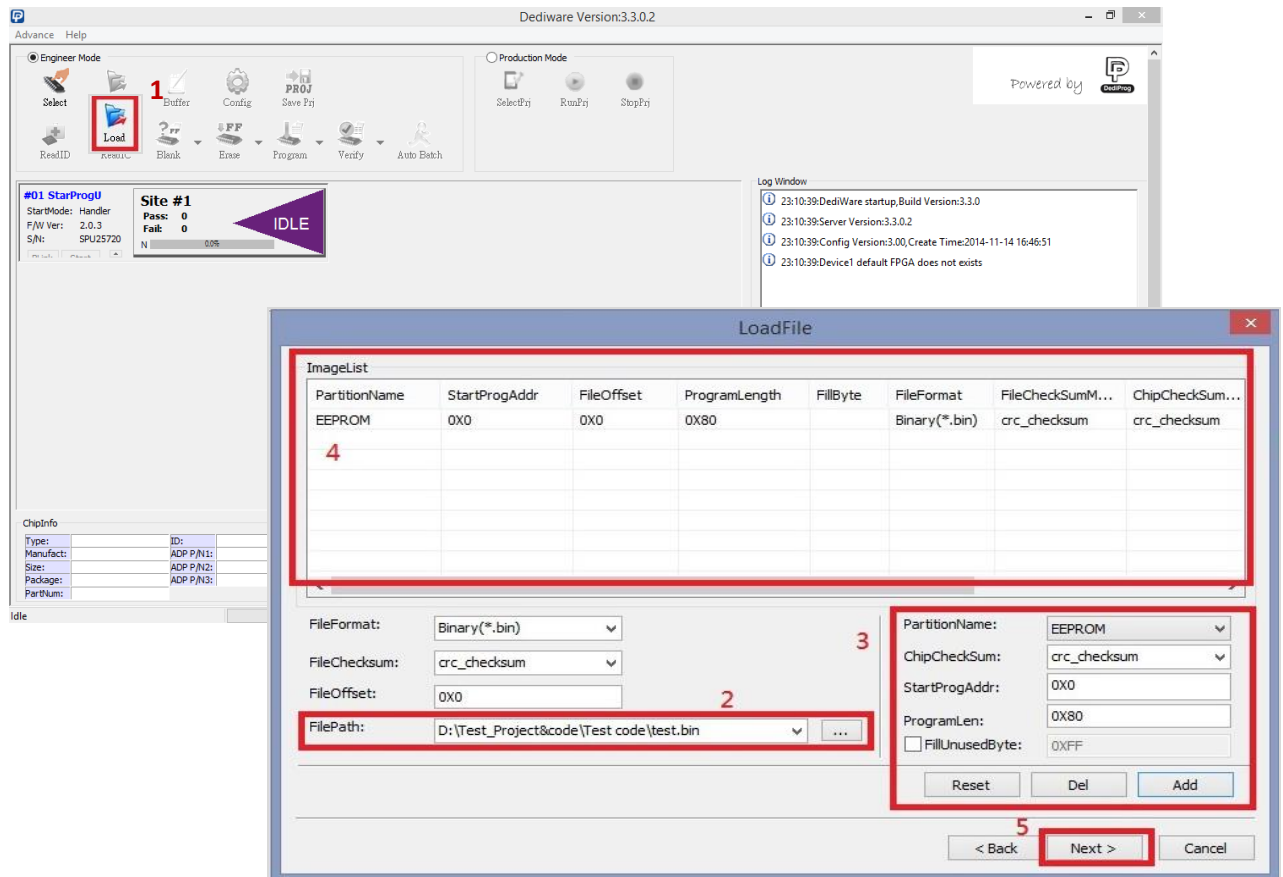
2. Click OK



### 3. Select IC brand and IC part number.

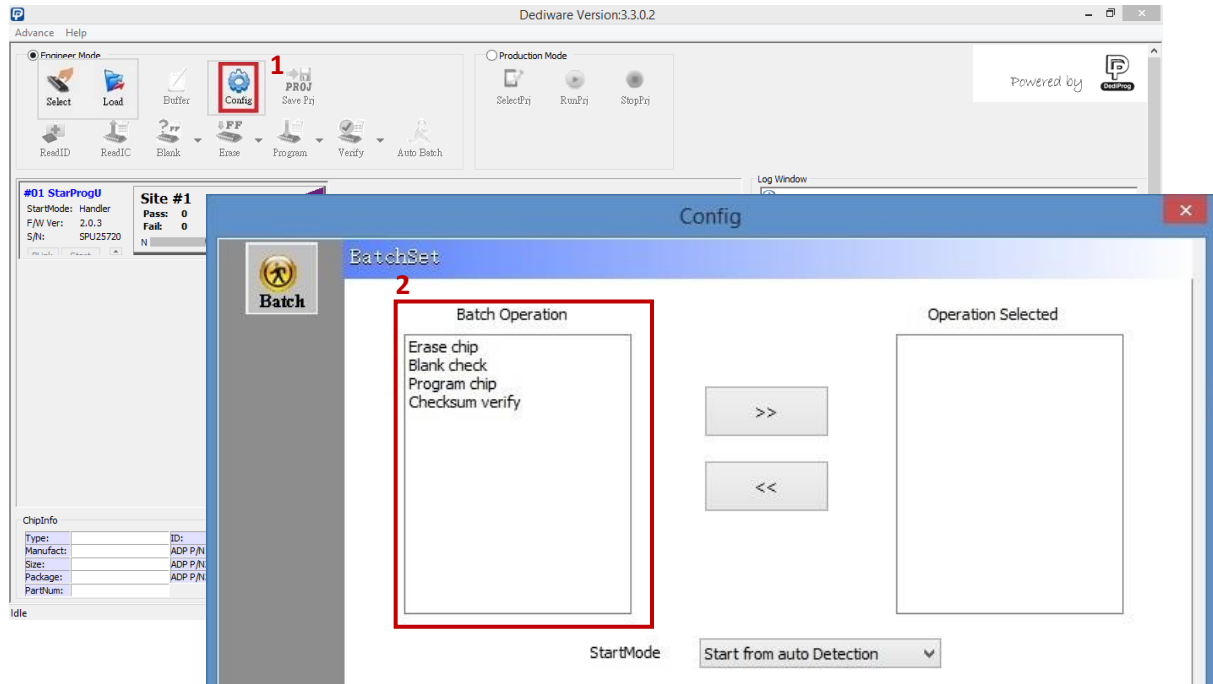


### 4. Load the programming file.

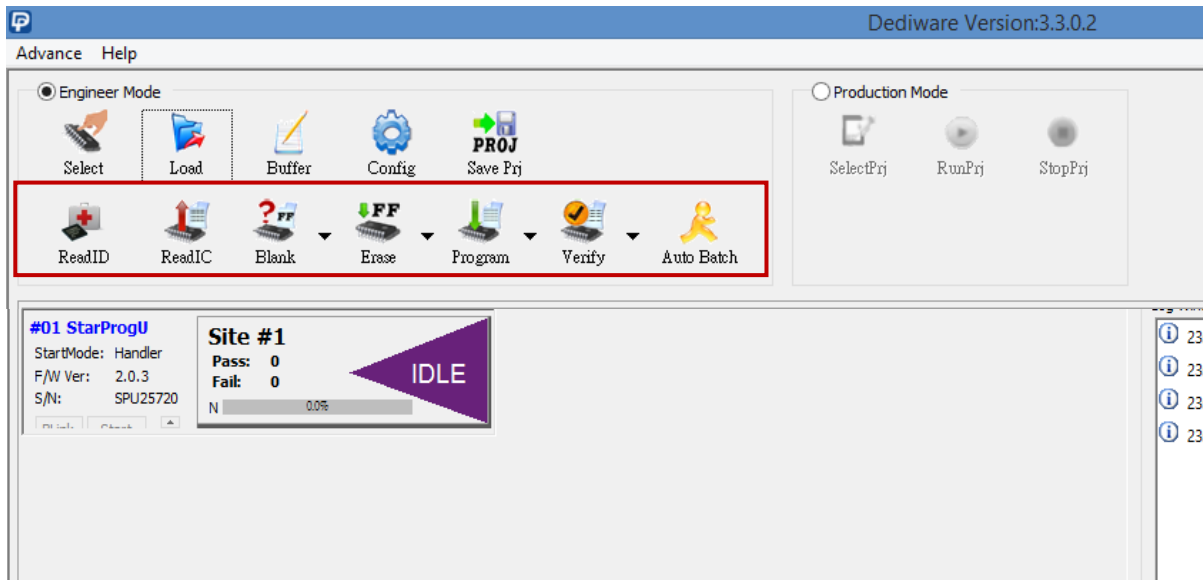




### 5. Set programming procedure



### 6. Start programming

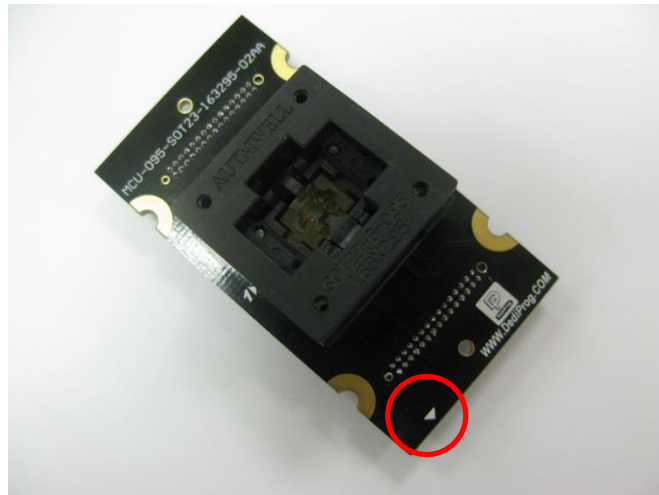


✘ **Note : Please ensure placed the SD card when production mode.**

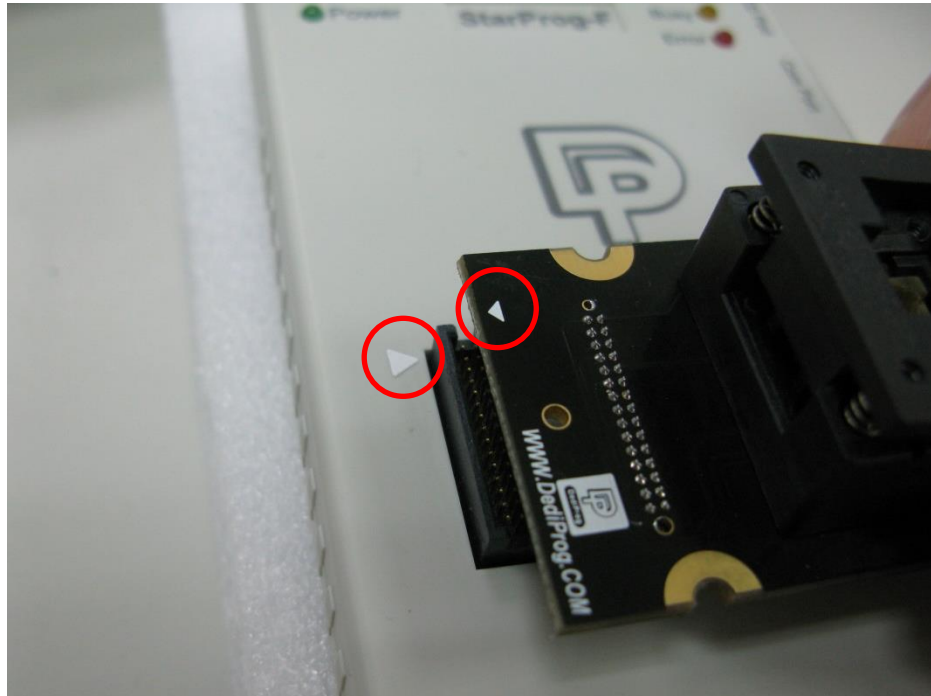
## VI. Appendix

### How to connect the socket adaptor to DediProg programmers?

The new socket adaptor has a white triangle marker on the left and lower side of the socket.



To avoid plugging the wrong direction to the programmer. Ensure the triangles of the socket and StarProg-F/U are alignment.



## VII. Revision History

Date	Version	Changes
09/11/13	1.0	First release
04/30/14	1.1	Supplement the socket adaptor plugging direction
07/25/14	2.0	Dediware software new version released
12/26/14	3.0	<ol style="list-style-type: none"><li>1. Modify the Dediware UI</li><li>2. Deleted the offline programming function</li><li>3. Add Production mode information</li></ol>

### DediProg Technology Co., Ltd (Taiwan)

4F., No.7, Ln. 143, Xinming Rd., Neihu Dist., Taipei City 114, Taiwan TEL: 886-2-2790-7932

### DediProg Technology (ShangHai)

Room 503, Block E, No.1618, Yishan Road, Shanghai, China TEL: 86-21-5160-0157

Technical Support : [support@dediprogram.com](mailto:support@dediprogram.com)

Sales Support : [sales@dediprogram.com](mailto:sales@dediprogram.com)

[www.dediprogram.com](http://www.dediprogram.com)

Information furnished is believed to be accurate and reliable. However, DediProg assumes no responsibility for the consequences of use of such information or for any infringement of patents or other rights of third parties which may result from its use. Specifications mentioned in this publication are subject to change without notice.

This publication supersedes and replaces all information previously supplied.

All rights reserved Printed in Taiwan.